

# Presidents Post

Hi to all and thank you for reading the newsletter. One month out from opening night, it is all starting to happen around the shed for "Spelling Bee". Please remember we have a shortened season for this show and it would be terrible if people miss out. The cast and production team have worked very hard and the show is fantastic, please support this one and try to get a group or a friend to come that have not seen a PLOS show before. They won't be disappointed. Fran Boyd is doing a sterling job on company tickets so contact her if you have a group booking.

I am looking forward to catching up with many of you who have booked tickets to see Dusty on the 4th of June. Brett is looking after the collection of money which he would like finalised before the night, so get onto Brett if you need to pay for Dusty tickets. I think at last count there were over 30 of us going so we will be able to give Jodie, Sarah and Bev a huge PLOS cheer on the night.

You will see we have announced our production team for Sound of Music which is very exciting. There is more to come on this front but we will wait until after "Spelling Bee" before we say any more. We are not far off some announcements for our mid year show 2011. Things are certainly ticking along!

This is probably our last newsletter before "Spelling Bee" opens so I would like to thank everyone involved for their work so far and wish cast and crew a huge "chooka's" for opening night and the season. Lets all get behind this show and make it the huge success it deserves to be.

See you at the AGM which is a slightly different venue this time. See the newsletter for details. Sorry about this but we don't normally do shows in June!

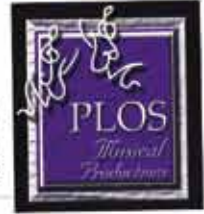
Colin Armstrong *President*

## Behind the Scenes





## Spell.....



Spelling Bee will introduce you to this years championship spellers from Putnam County, New York - Chip, Leaf, William, Logainne, Olive and Marcy. All are vying for the title, assisted by grown ups who have barely managed to escape childhood themselves, a nostalgic former spelling bee winner, a mildly insane Vice Principal, and The Official Comfort Counselor.

The contestants will face off in a battle of their lives. As well as spelling, the contestants will learn that winning isn't everything and losing doesn't necessarily make you a loser.

The original 2008 Broadway production won two Tony Awards, including the Tony Award for Best Book and Best Actor.

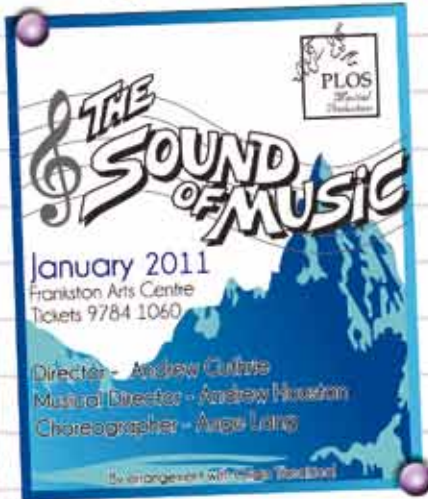
PLOS 's Musical Productions creative team will create one of the unlikeliest of hit musicals about the unlikeliest of heroes; a quirky yet charming cast of outsiders for whom spelling bee is the one place where they can stand out and fit in at the same time.

The competition is intense. The words are hilarious. Let the spelling begin!

A brilliant tale of overachievers!

The 25th Annual Putnam Spelling Bee will be simply  
W-O-N-D-E-R-F-U-L!

## Introducing the Sound of Music Team



**Director - Andrew Guthrie**  
**Musical Director- Andrew Houston**  
**Choreographer - Ange Lang**

**Auditions will be held following our June production of The 25th Annual Putnam County Spelling Bee.**

**Audition Bookings will commence after Information Night.**



The Hills are alive

## Want to join the team?

Contact Brett Wingfield via email [brett@plos.asn.au](mailto:brett@plos.asn.au)

## Shed Working Bee

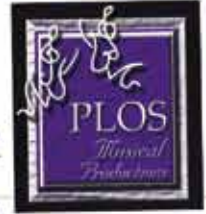
**OK Team - It's time to roll up you're sleeves and get your hands dirty!**  
**The Shed needs a spit and polish, and we need people to come and help us!**

**Saturday June 26th**  
**10am - 4pm**

**Sausage sizzle, friends and company will be included!**



**FROM THE EDITORS LAPTOP**  
My apologies for the massive file size of last months newsletter. I've fixed the problem and all will now be well in the world of emails!



## Member in Focus - Kellie-Anne Plays Logainne Schwartz and Grubenierre in Spelling Bee

**Name** Kellie-anne Kimber

**Occupation** Venue Manager and assistant drama teacher for Children's Performing Company of Australia (CPCA)

**What drew you to the theatre?** I've always been a bit of a drama queen around the house so mum thought I should put my acting skills to use and joined me up to the local theatre company. I have been addicted ever since!

**What was your first on stage production?** I think it was Wind in the Willows when I was about 13.

I was a squirrel.

**How many years have you been involved with PLOS?** This is my first year with PLOS and everyone has been so wonderful and accepting!

**Do you have any hidden skills?** Umm... I can balance 7 pencils on my nose? Oh, and I play the ukulele!

**What is your favourite musical?** I would not be able to pick just one musical but I do love modern musicals such as Legally Blonde, Spring Awakening, The Last Five Years and Next to Normal. Oh, and rock musicals are up there too!

**What do you love about the theatre?** I just love being on stage because you can feel the emotion with the audience, which is something you can't get when you're watching a movie.

**If you were a crayon, what colour would you be and why?** Aqua! No real reason except for the fact an awesome 90's band is named after it.



Kellie-anne



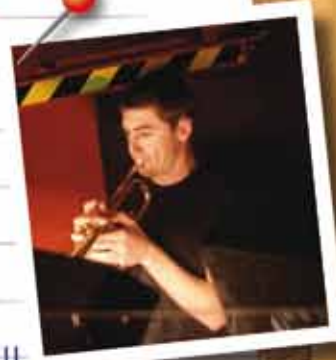
# CONGRATULATIONS!

to

## Dean Pratt

awarded

Best Apprentice Level 2  
Certificate III in Automotive  
(Mechanical - Light Vehicle)



And Trumpet Player extraordinaire!!

## PLOS AGM

## Tuesday, June 15th

The Green Room at Frankston Arts Centre  
Commencing at 7pm

Don't miss out on  
the next newsletter  
- renew your  
membership NOW!

Pay Here!

## Upcoming Events

### The 25th Annual Putnam County **SPELLING BEE**

Thursday 17th June - 8pm

Friday 18th June - 8pm

Saturday 19th June - 8pm

Sunday 20th June - 2pm

ADULTS - \$36.00      PSSU - \$31.00

U/16 - \$23.00

For 20 tickets or more for one performance - PSSU price.

Tickets on sale NOW!

9784 1060 or

Click Here!!!!

# TRIVIA NIGHT



Saturday, July 24th,  
commencing at 7pm

- \*Great prizes
- \*Silent Auction
- \*Night of hilarity
- \*Make a team or join on the night
- \*\$10 pp entry
- \*Beverages at Bar prices

Mornington RSL  
Virginia Street, Mornington

Hosted by Bryn Bowen  
with Able Assistant Daz

## GOT SMARTS?

RVD holders must be in original packets (no plastic of old cheese, coffee etc)

## Get Well Soon

Chris Congdon - Our thoughts are with you.

Hope to see you up and about. And back for Front of House for Spelling Bee.

## Congratulations!

Matt and Emma Woodford  
On the arrival of Max Oliver

## With Sympathy

Al Brown - PLOS Committee and Members would like to pass on there condolences to Doreen and family on the passing of Al Brown. Remembered fondly by all as the smiling Tea Man in the kitchen who always made the Tea Break and Interval a fun time.

Have something that you would like to share or advertise?  
It's easy!

Simply send all information to  
mail@plos.asn.au  
Mark it attention  
'Newsletter Editor' and I'll do the rest.

Nothing great was ever  
achieved without enthusiasm!  
Kyliexx

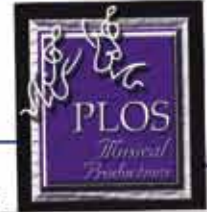
Know someone who'll enjoy reading our newsletter and finding out more about PLOS Musical Productions.

Click here to register their interest!





# Brownie's Adventure



Hi Everyone, I hope this finds you all well and that life back at home is wonderful for you all.

I have been trying to keep a little log of all my travels over the past 7 weeks I have been gone from the reality of life and have been lapping it up on the brilliant Rhapsody of the Seas. So here goes..

We sailed out of Sydney for the last time in the middle of April (I can't remember what date as we go by what day number of the current voyage it is, day 1, 2, 3 and so on) The Sydney skyline gradually faded into the distance as I spoke to family and friends for the last time before reception dropped out. 6 days at sea and the crossing of the international dateline came next as we sailed towards Tahiti. Tahiti was absolutely stunning. There we went to Papeete, Moorea, Bora Bora (where parts of South Pacific was filmed) and Raitea. There I swam with Stingrays and snorkelled and also swam with sharks! AMAZING yet a little heart racing. From Tahiti we had another 4 days at sea crossing the equator with a big ceremony and short comic act with King Neptune and others (of course I was in the cast) which was loved by our guests, I will send the photos!

After another tiring 4 days straight at sea we hit Hawaii, well we didn't hit it but slightly bumped it! Ha ha. (Sense of comic relief = poor) We sailed into Lahaina, a beautiful seaside town and major tourist attraction in Hawaii. Again absolutely stunning. We then set sail for Honolulu, which was our turnaround day. 2000 guests got off and another 2000 get on. In Honolulu I was a daredevil and decided with the rest of the Cruise Division Staff that Skydiving was today's excursion. Jumping out of a plane was the most exhilarating thing I have ever done. We then went back to Lahaina and had an overnight stay in port there. We hired Mo-peds and toured parts of the island (check out the Facebook photos) which was also a great thrill and also driving on the wrong side of the road. WOOT! Another 2 days in Hawaii saw me shopping at Wal-mart and Ross spending a bit of my pay! Dangerously good bargains! In Hilo on Hawaii Island we drove up to the volcano and spent the day touring around the national park there. Which was amazing also.

Now we are on our way to Vancouver Canada to start our Alaskan run for 4 months which is very exciting. Our home port will be Seattle in the US and we will be doing the same trip every week until we sail back to Australia later in the year. Life on board is extremely fun and the team I work with are so fun and great. We have all become like family so quickly.

I hope you are all well and loving life as we all should. I wish the cast of Spelling Bee all the best and wish I could be there to see it! To all my PLOS friends, I think you are the best bunch of people in the world and I can't wait to get home and see you all.

Much love and smiles all the way from the North Pacific.

xoxox BROWNIE!

